

31

CHIPINGA A  
CONTROLLED  
HUNTING  
AREA

OMBERSLEY

WHITTINGTON VALLEYS

ST. KEVIN

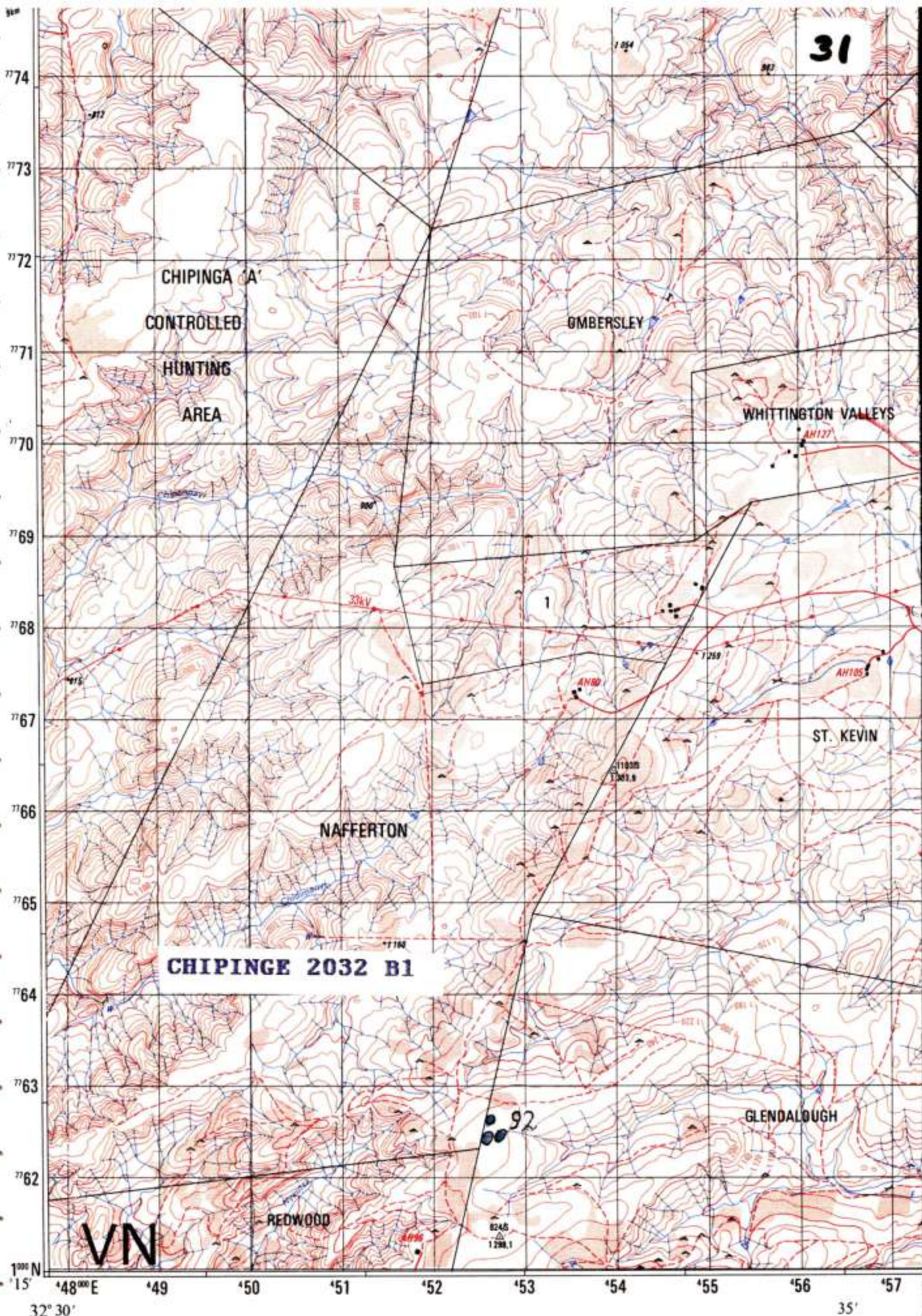
NAFFERTON

CHIPINGE 2032 B1

GLENDALOUGH

REDWOOD

VN



32° 30'

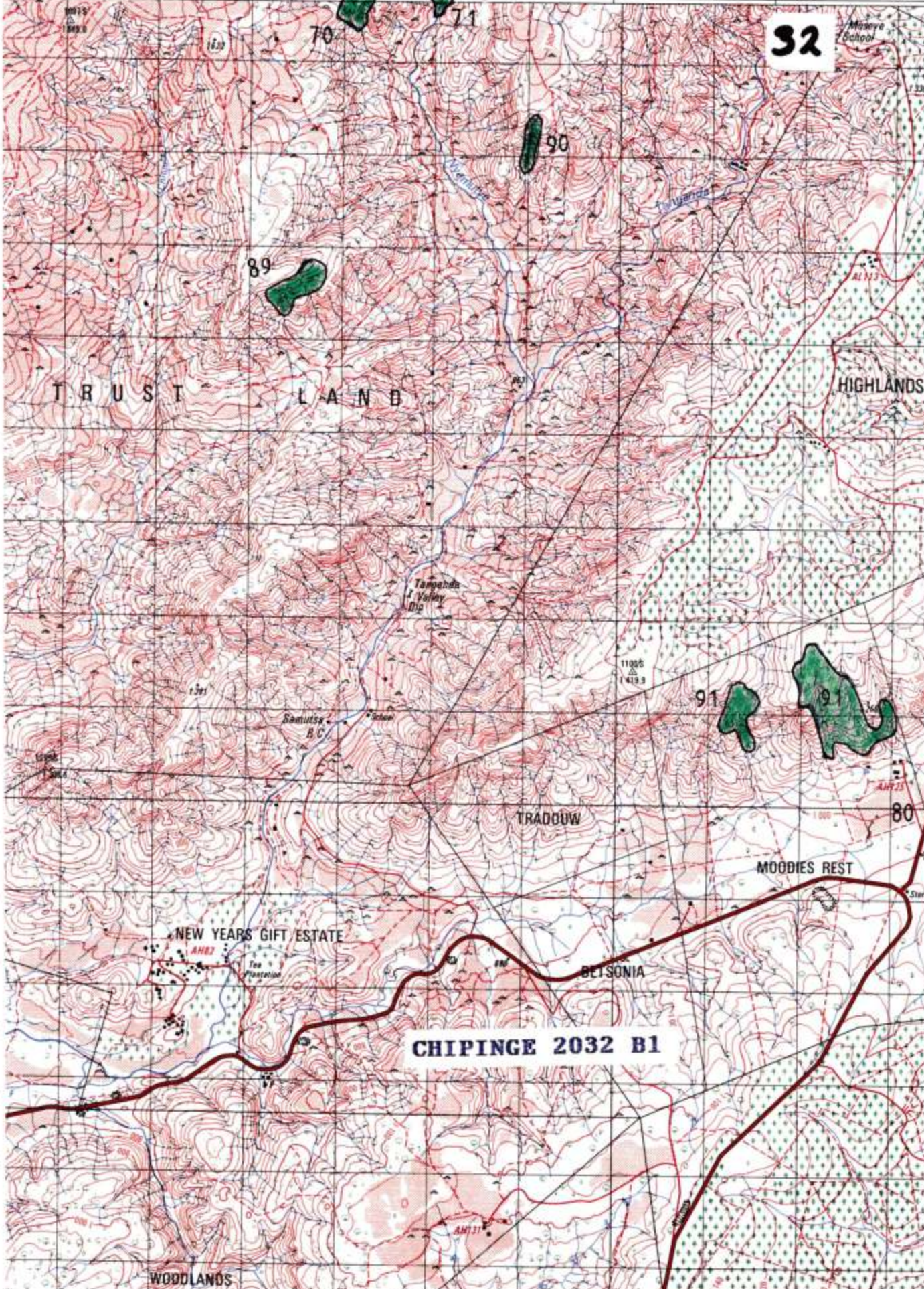
35'



'54 '55 '56 '57 '59 '60 '61 '62 '63

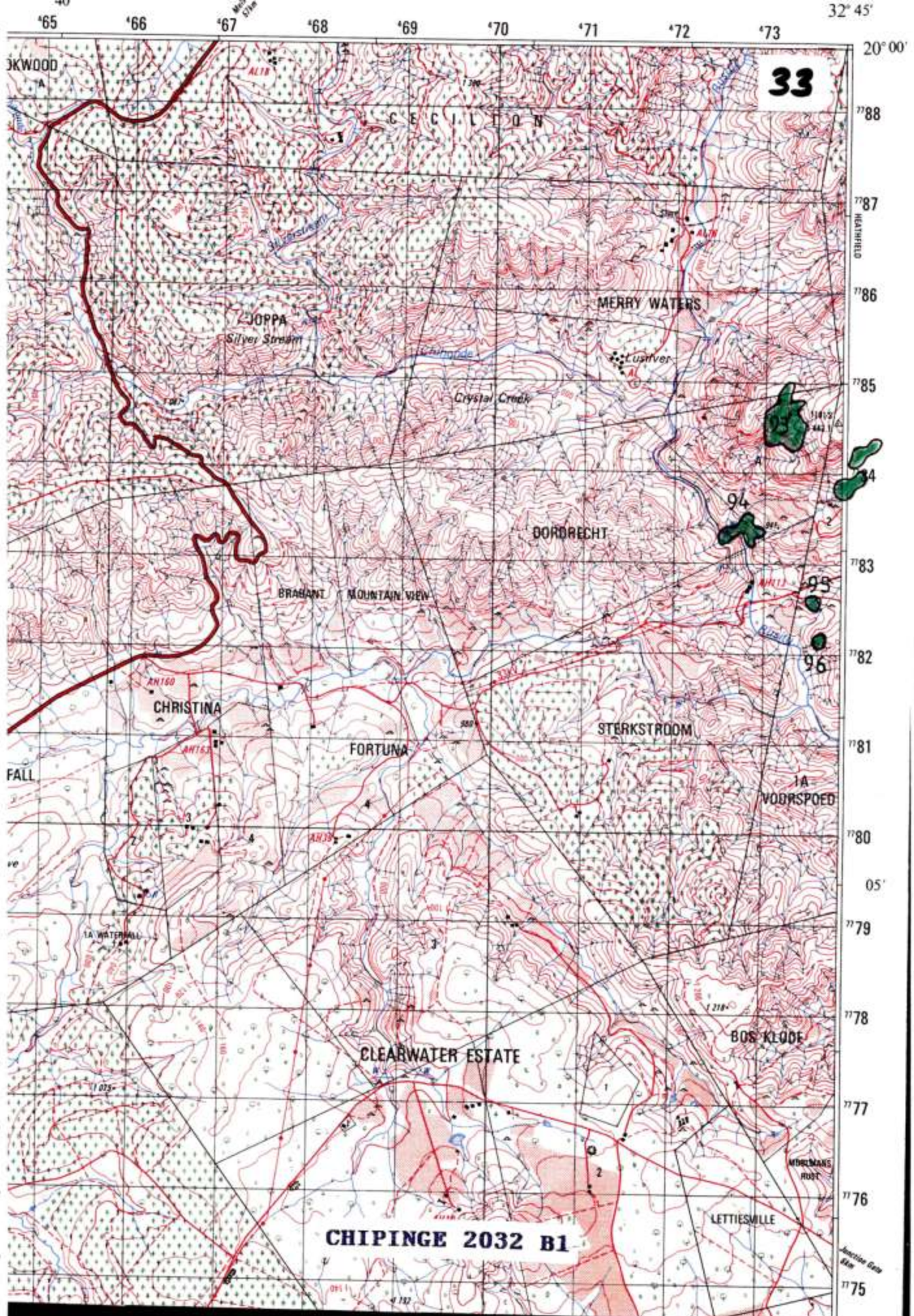
35'

32



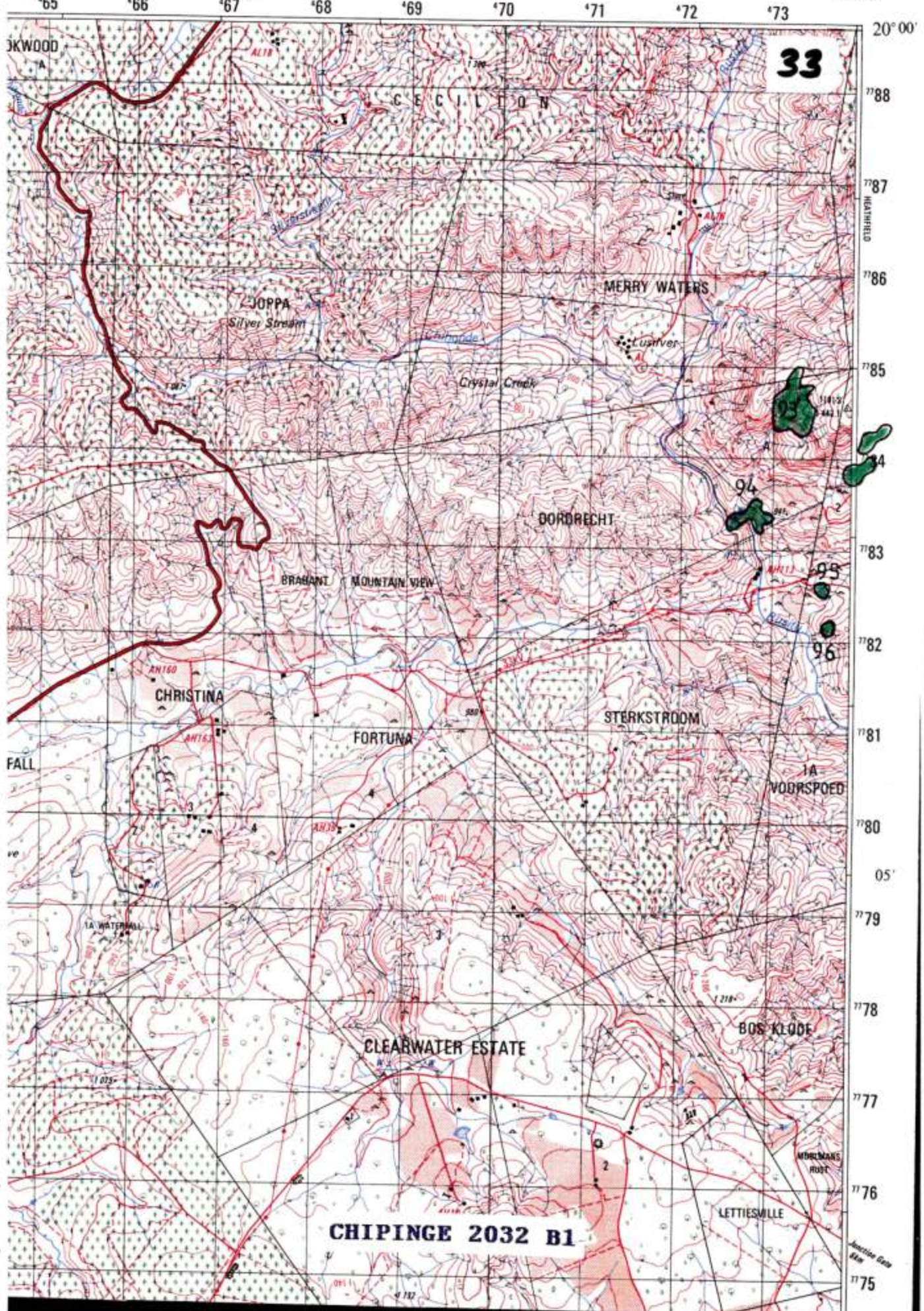
CHIPINGE 2032 B1





33

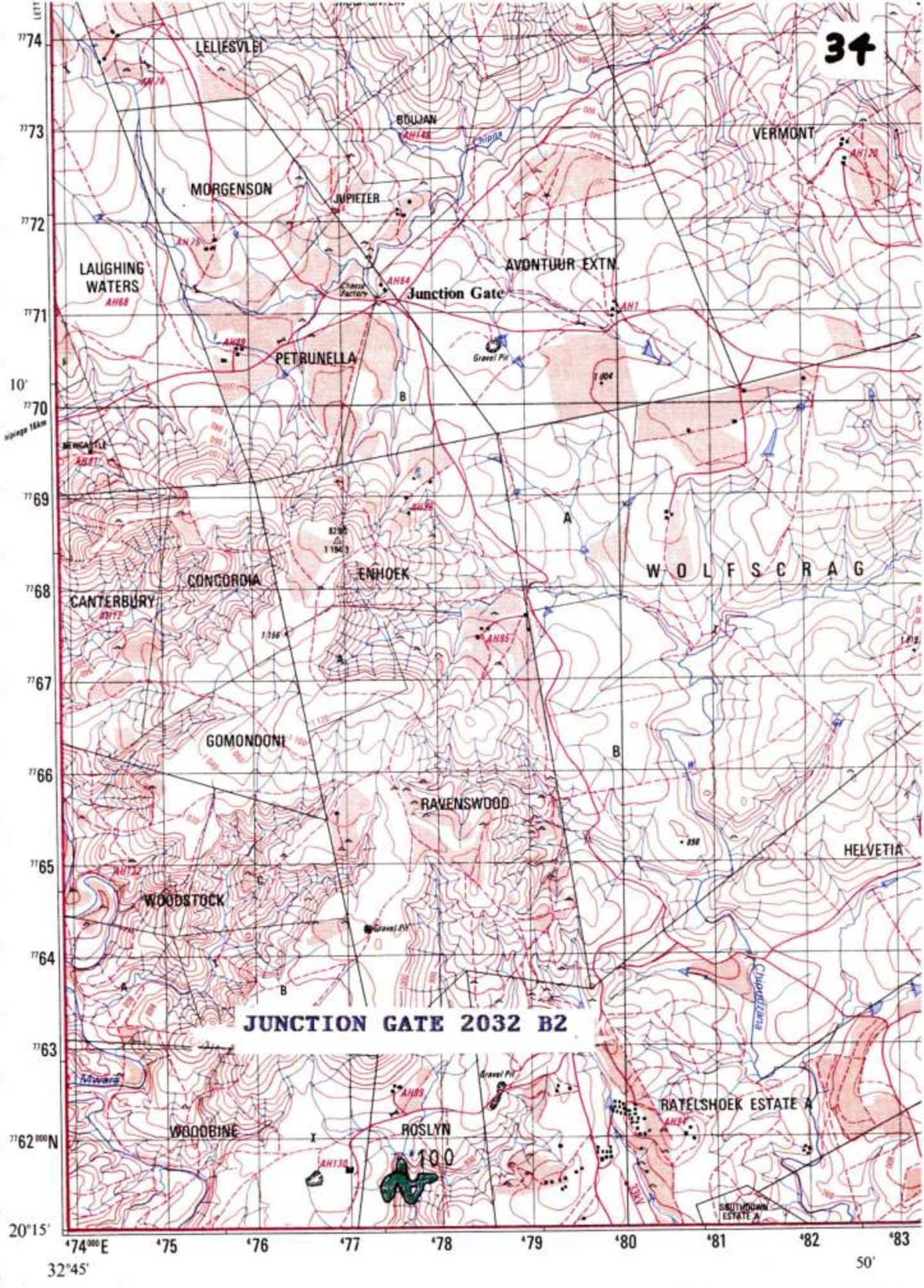
CHIPINGE 2032 B1



33

CHIPINGE 2032 B1

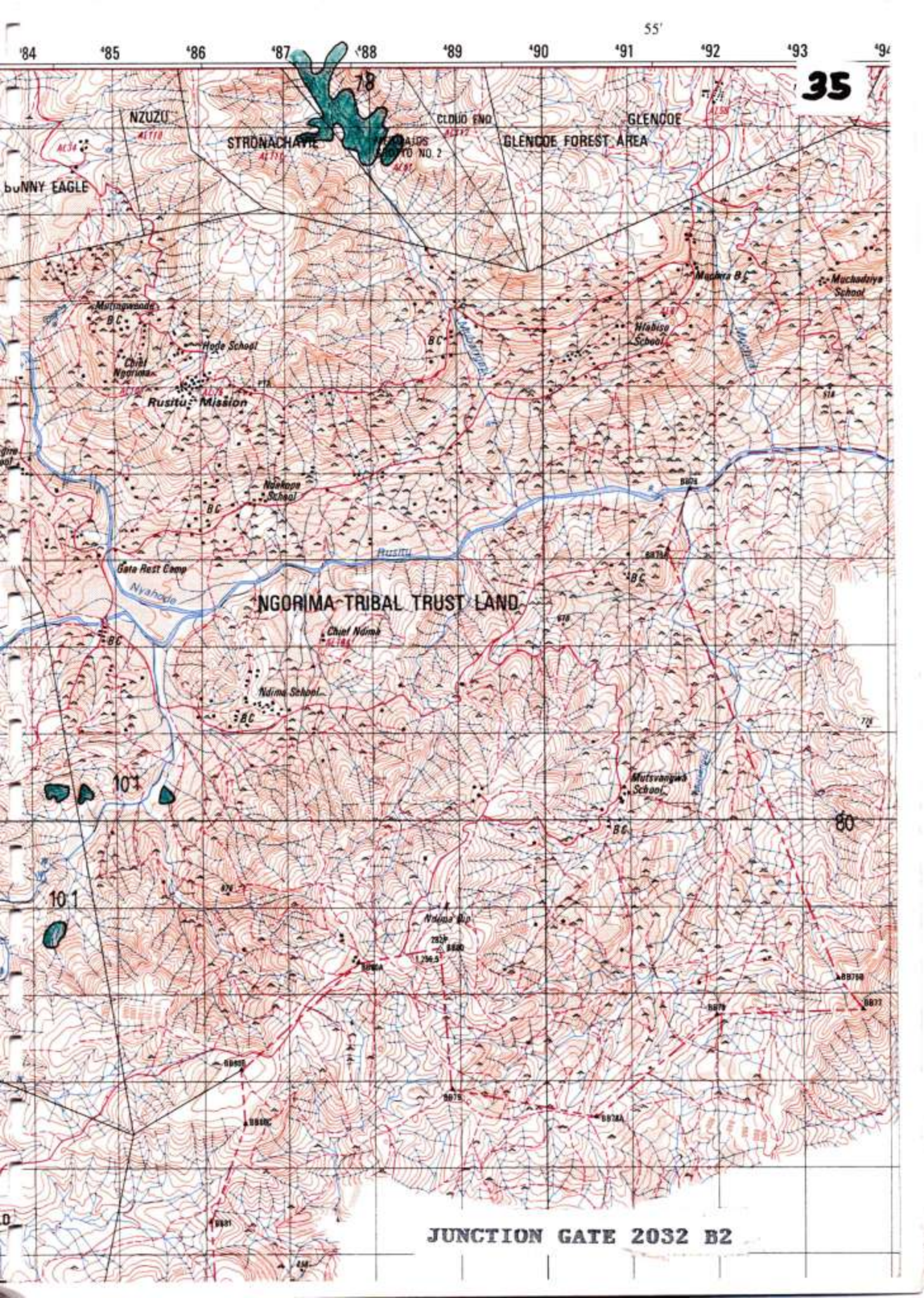




JUNCTION GATE 2032 B2

74°E 75 76 77 78 79 80 81 82 83  
 20°15' 32°45' 50'





55'

'84 '85 '86 '87 '88 '89 '90 '91 '92 '93 '94

35

NZUZU

STRONACHAYE

CLOUD END

GLENCOE

GLENCOE FOREST AREA

bUNNY EAGLE

Murungwende

Hode School

Rusitu Mission

NGORIMA TRIBAL TRUST LAND

Gata Rest Camp

Nyanhede

Chief Ndima

Ndima School

Mashra B.C.

Muchadziya School

Hlabiso School

Mutsvanywa School

Ndima B.P.

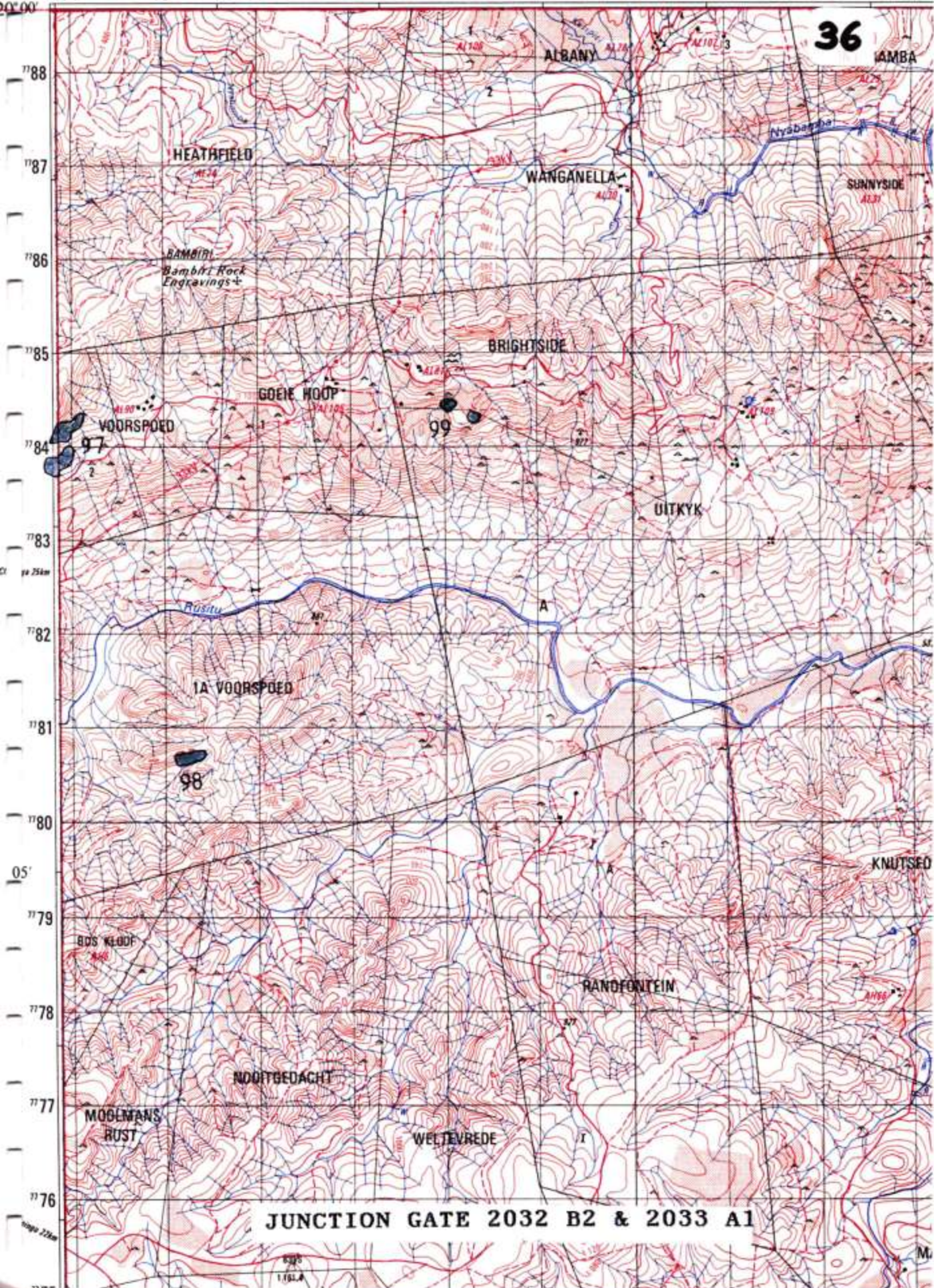
1 296.5

JUNCTION GATE 2032 B2



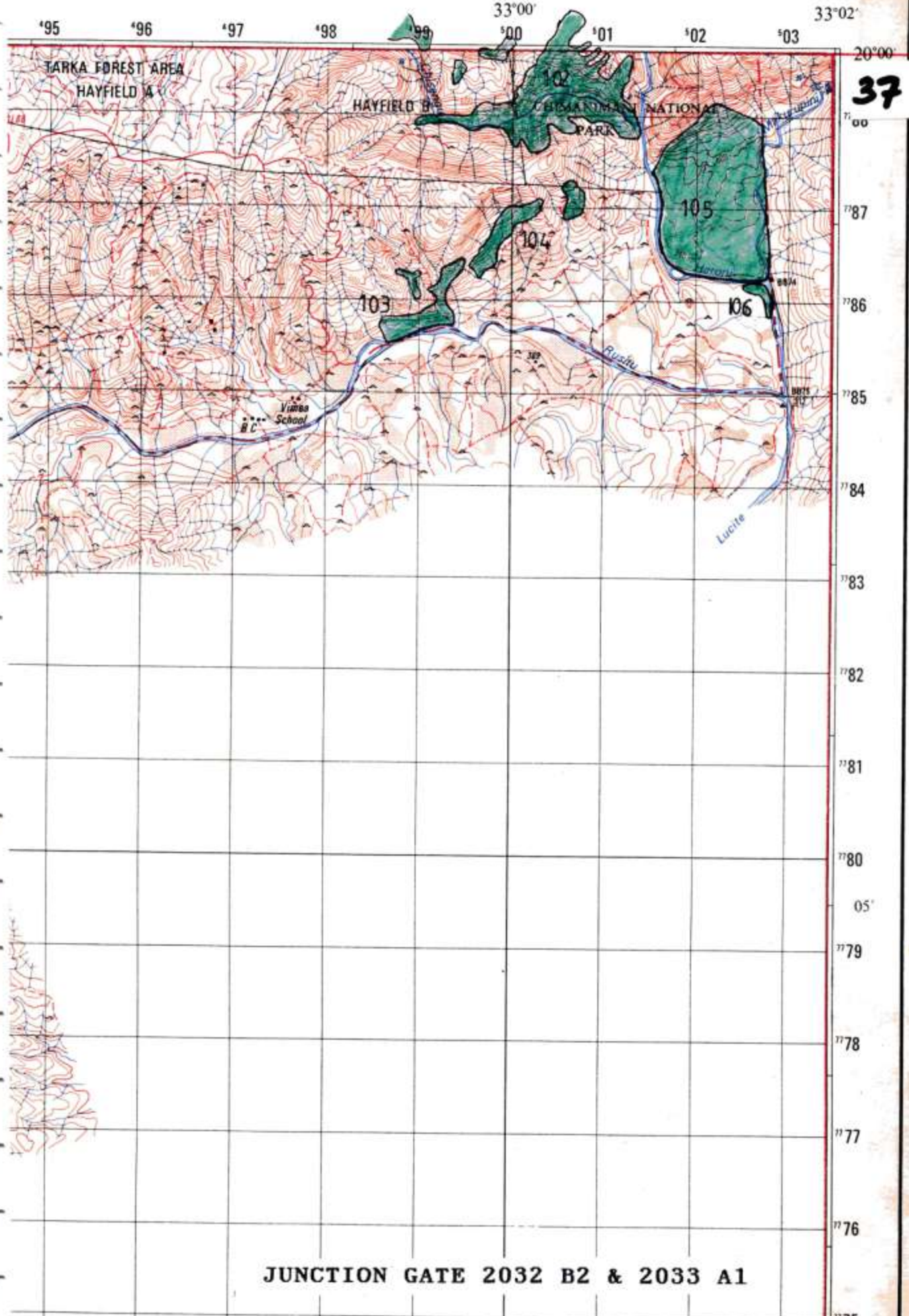
32°45' 50' 00'  
'74 '75 '76 '77 '78 '79 '80 '81 '82 '83

36



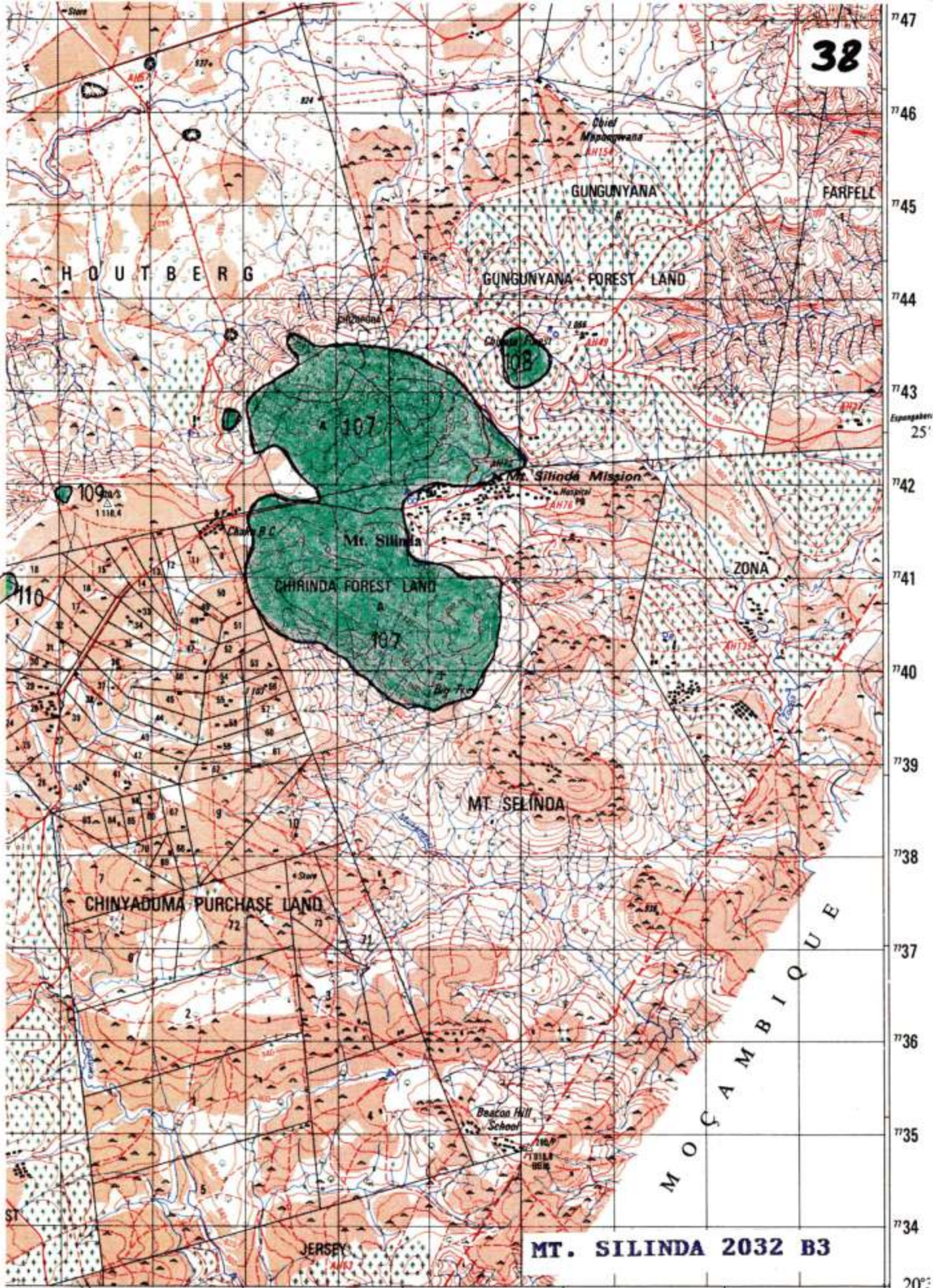
JUNCTION GATE 2032 B2 & 2033 A1





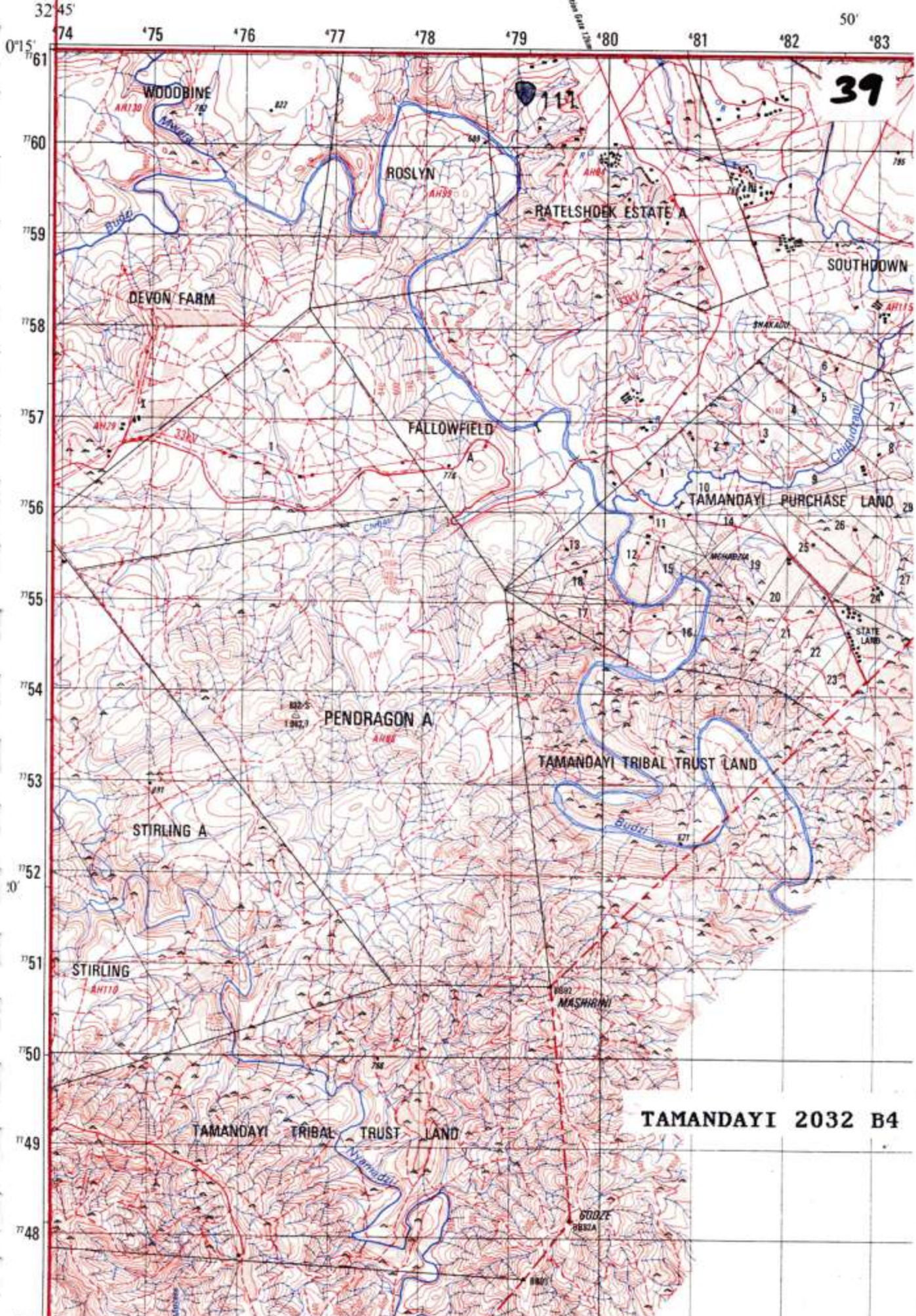
JUNCTION GATE 2032 B2 & 2033 A1





MT. SILINDA 2032 B3





39

TAMANDAYI 2032 B4

