

[Back to Links Page](#)

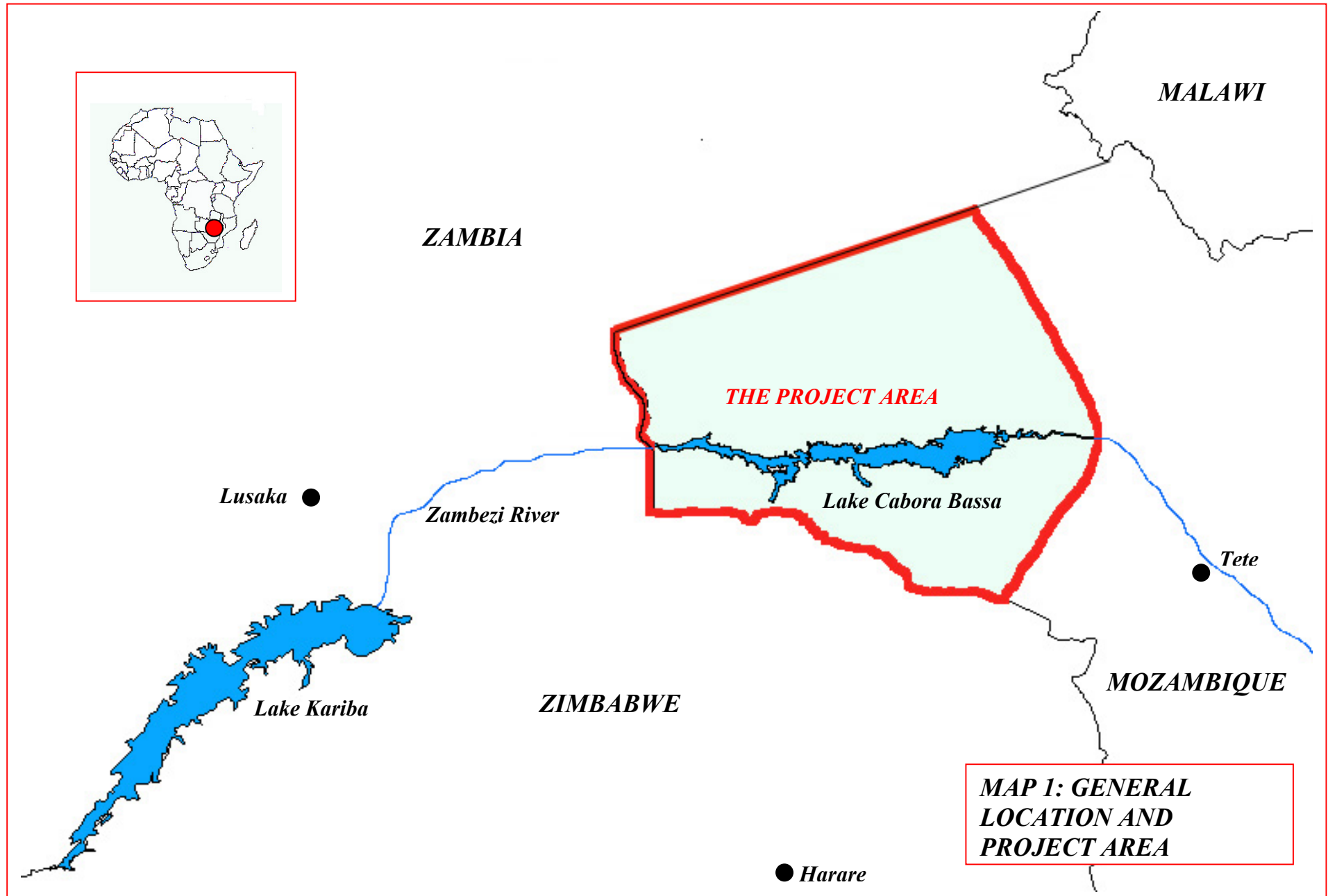
CONTENTS

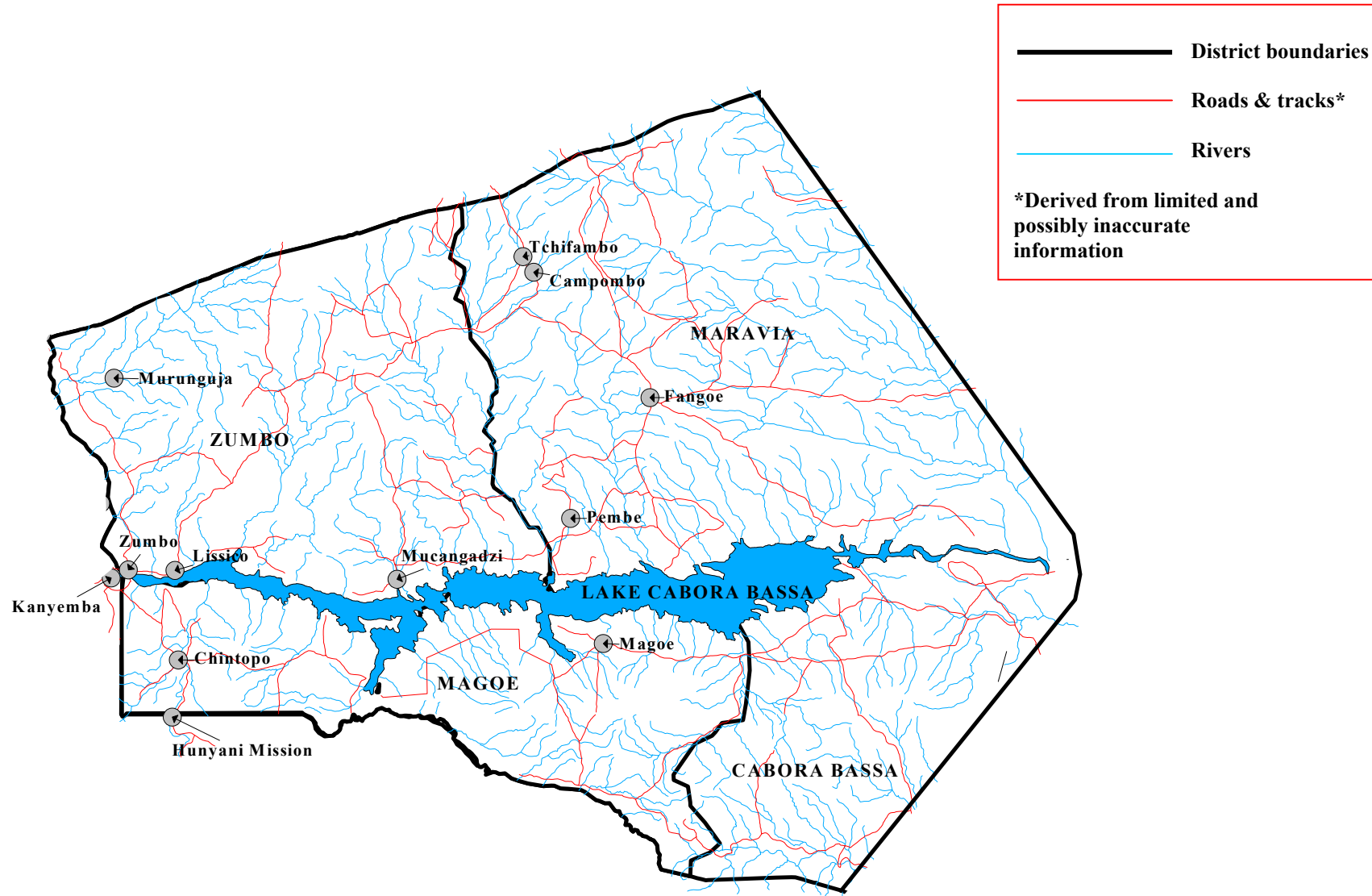
[Back to Links Page](#)
for access to:

- **TITLE PAGE, PUBLISHING INFO, FOREWORD & EXECUTIVE SUMMARY**
- **VOLUME I : SYNTHESIS REPORT**
- **VOLUME II : APPENDICES (TECHNICAL REPORTS)**

This volume: **MAPS**

	Page
Contents:	i
MAPS:	
Map 1: General Location and Project Area	
Map 2: The Project Area	
Map 3: Simplified Geology of the Project Area	
Map 4: Vegetation of the Project Area	
Map 5: Lake Cabora Bassa and its Shoreline	
Map 6: Units of Important Plant Diversity	
Map 7: Landscape Features of Conservation Interest	
Map 8: Broad areas of Biodiversity Interest	
Map 9: Areas of Wilderness Importance	

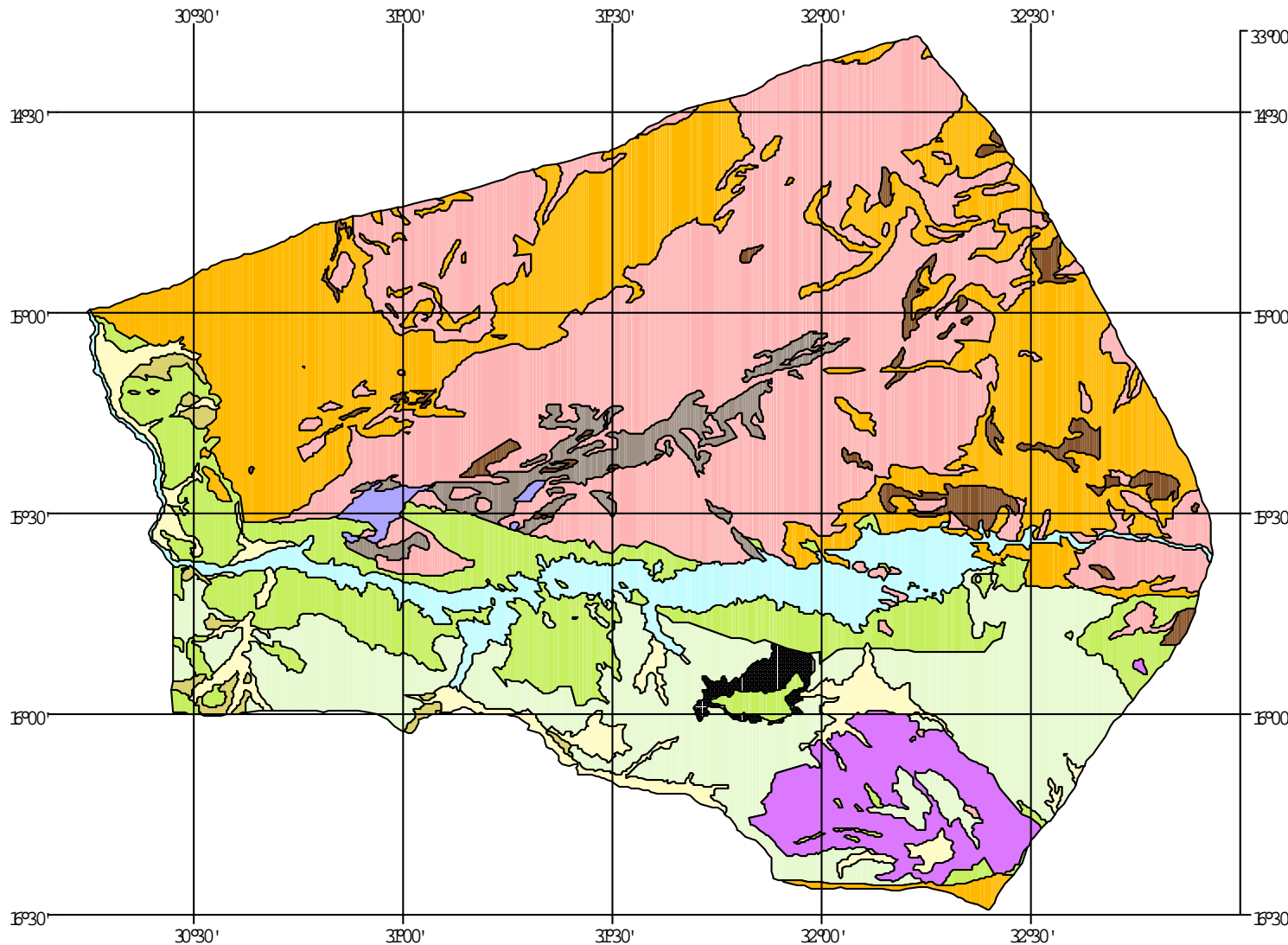




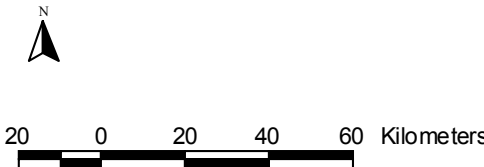
MAP 2: THE PROJECT AREA

[Back to Contents](#)

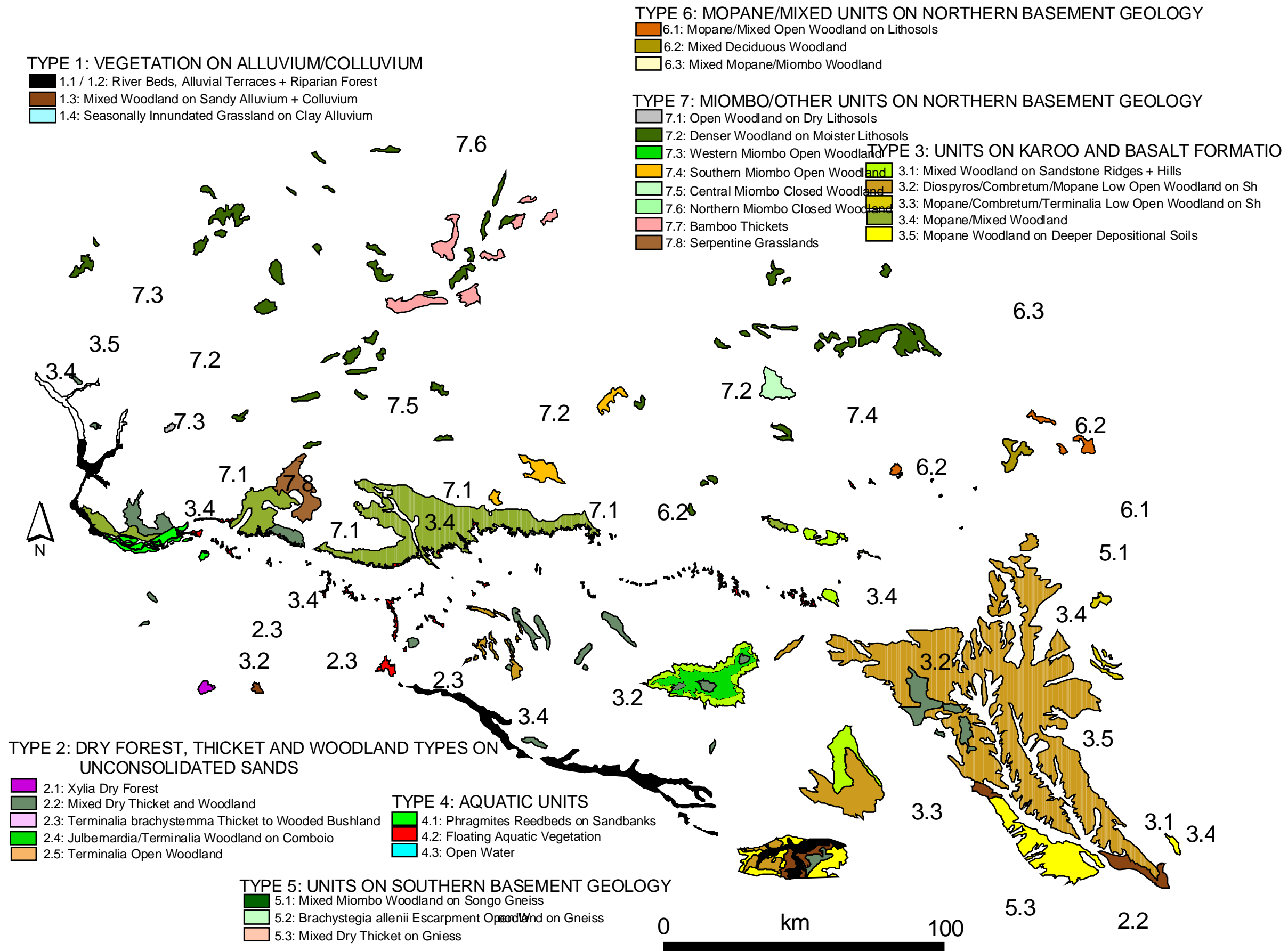
MAP 3: SIMPLIFIED GEOLOGY OF THE PROJECT AREA



- Simplified geology
- Recent alluvium
 - Colluvial fan
 - Pleistocene terrace
 - Cretaceous sandstone
 - Jurassic basalt
 - Karro sandstone/shale
 - Granite/quartzite
 - Ultramafic intrusions
 - Metasediments
 - Basic/mafic rocks
 - Gneiss
 - Open water/rivers



Geology simplified from 1:1 000 000 Mozambique geology map (Instituto Nacional de Geologia 1987) by J. Timberlake and T. Broderick, 2001



MAPPING PREPARED BY THE ZAMBEZI BASIN INITIATIVE FOR BIODIVERSITY & CONSERVATION: A PARTNERSHIP BETWEEN THE ZAMBEZI SOCIETY, THE BIODIVERSITY FOUNDATION FOR AFRICA, AND FLORA & FAUNA INTERNATIONAL

MAP 4: VEGETATION OF THE PROJECT AREA